



REGISTRATION  
MARCH 18 - APRIL 22

  
**SEASPAR**  
SPECIAL RECREATION ASSOCIATION



01



### CORE VALUES

Fun • Friendships  
Caring • Trust  
Accountability

### VISION

Discover Abilities  
Achieve Potential  
Realize Dreams

### MISSION

Enriching lives  
through recreation



**YOU ARE THE UNIQUE PIECE OF OUR PUZZLE!**

**FIND YOUR FRIENDS OR FAVORITE STAFF AND CREATE YOUR OWN PUZZLE.**

**CUT THE PIECES AND BE CREATIVE!**

**REGISTRATION: MARCH 18 - APRIL 22**

**SEASON DATES: JUNE 10 - AUGUST 4**

## WELCOME TO CAMP SEASPAR!

Camp SEASPAR offers children and adults ages 3-22 the best of SEASPAR programs in a well-rounded camp experience.

Keeping safety at the forefront is our number one priority at Camp SEASPAR. The daily activities are designed to enable individuals with special needs to discover new abilities, realize their potential, and realize their dreams.

Your imagination is the limit! Are you ready for the journey?

## GENERAL INFORMATION

Association Members and Representatives	2
Camp Directory	2
Contact Information	4
Daily Requirements	6
Daily Routine	15
Fee Assistance Program	3
Program Locations	4
Program Policies	11-12
Registration Form	15
Registration Information	3-5

## SUMMER CAMPS

<b>  Preschool Camp</b>	6
<b>  Kids Camp</b>	7-8
Kids Camp Downers Grove	8
Kids Camp Western Springs	8
Kids Half Day Camp La Grange	8
<b>  Teen &amp; Adult Camp</b>	9-10
Teen & Adult Camp Lemont	9
Teen & Adult Camp Westmont	9
Teen & Adult Half Day Camp La Grange	9
<b>Puzzle Book</b>	20

## ASSOCIATION MEMBERS & REPRESENTATIVES

The South East Association for Special Parks And Recreation (SEASPAR) provides dynamic recreation programs and quality services for individuals with disabilities in the communities of Brookfield, Clarendon Hills, Darien, Downers Grove, Indian Head Park, La Grange, La Grange Park, Lemont, Lisle, Western Springs, Westmont, and Woodridge.

SEASPAR is composed of 12 associated members, which are represented by the following individuals:

<b>Downers Grove Park District</b> 2245 Warrenville Road, Downers Grove	<b>Bill McAdam</b> President
<b>Lemont Park District</b> 16028 127th Street, Lemont	<b>Louise Egofske</b> Vice President
<b>Lisle Park District</b> 1925 Ohio Street, Lisle	<b>Dan Garvy</b> Secretary
<b>Darien Park District</b> 7301 Fairview Avenue, Darien	<b>Stephanie Gurgone</b> Treasurer
<b>Village of Brookfield</b> 8820 Brookfield Avenue, Brookfield	<b>Luke Gunderson</b>
<b>Clarendon Hills Park District</b> 315 Chicago Avenue, Clarendon Hills	<b>Kathy Forzley</b>
<b>Village of Indian Head Park</b> 201 Acacia Drive, Indian Head Park	<b>Amy Eckert</b>
<b>Park District of La Grange</b> 536 East Avenue, La Grange	<b>Jenny Bechtold</b>
<b>Community Park District of La Grange Park</b> 1501 Barnsdale Road, La Grange Park	<b>Jessica Cannaday</b>
<b>Village of Western Springs</b> 1500 Walker Street, Western Springs	<b>Aleks Briedis</b>
<b>Westmont Park District</b> 55 East Richmond Street, Westmont	<b>Bob Fleck</b>
<b>Woodridge Park District</b> 2600 Center Drive, Woodridge	<b>Jenny Knitter</b>

## BOARD MEETINGS

SEASPAR's Board meets the third Tuesday of every month at SEASPAR at 3:00pm. The public is welcome. For information call 630.960.7600.

Board meeting minutes and agendas are available online at [SEASPAR.org/Board](https://SEASPAR.org/Board).



### Welcome, Willowbrook!

In September of 2024, the Village of Willowbrook will join SEASPAR as its 13th member, but we are welcoming Willowbrook residents into programs now! See details on the Registration Information page.



## REGISTRATION INFORMATION

<b>ONLINE</b>	SEASPAR.org
<b>FAX</b>	630.960.7601
<b>MAIL/IN PERSON</b>	SEASPAR 4500 Belmont Road Downers Grove, IL 60515

## REGISTRATION PROCEDURES

**Registration opens on Monday, March 18**, and closes on Monday, April 22 at 4:30pm. Registration for all programming is lottery-based and enrollment is not guaranteed; confirmations will be emailed on or after May 3. If you would prefer to have your confirmation sent via postal mail, please call SEASPAR at 630.960.7600.

### ONLINE REGISTRATION

To register online, visit SEASPAR.org. First-time online registrants must call SEASPAR at 630.960.7600 or email [adminstaff@seaspar.org](mailto:adminstaff@seaspar.org) to gain access to their online account. The online registration requirements are:

- Must be a SEASPAR resident.
- Must have no outstanding balance.
- Must have an up-to-date ePACT Emergency Form on file.
- 

### IN-PERSON/FAX/EMAIL REGISTRATION

- Complete both sides of the registration form and sign it.
- Mail or drop off your registration form and payment at the SEASPAR office, 4500 Belmont Road in Downers Grove (for after-hours convenience, there is a mail slot at the SEASPAR office entrance) **OR**
- Fax registration form with credit card information completed to 630.960.7601 **OR**
- Email registration form with credit card information completed to [adminstaff@seaspar.org](mailto:adminstaff@seaspar.org).
- All participants must have an up-to-date ePACT Emergency Form on file.
- Full payment for programs must be received with the registration unless other arrangements have been made.
- Payment may be made by check, money order, cash, or credit card. **We accept Visa, MasterCard, Discover, and American Express!**



Registrations received after the registration deadline are accepted if space is available. Participants may not be added to a program with less than 48 hours notice.

## CREDIT/REFUND PROCEDURES

Credits/refunds may be issued for the following reasons:

**Participant is Placed on Waitlist:** A full credit for the waitlisted camp remains on the participant's account for the duration of the season unless the participant cancels from the waitlisted camp to receive a refund.

**Camp is Cancelled by SEASPAR:** A full credit for the cancelled camp remains on the participant's account, unless the camp is rescheduled.

**Participant Cancels from Camp:** If a participant cancels at least three (3) business days prior to the start of camp, a full credit for the camp remains on the participant's account, minus a \$5 processing fee and any ticket/service/supply fees already incurred. After the first day of camp, if the camp is deemed inappropriate for the participant or if the participant is dissatisfied with the camp, a full credit for the camp remains on the participant's account. After the second day, cancellation results in a prorated credit issued to the participant's account, minus a \$5 processing fee and any ticket/service/supply fees already incurred.

Credits under \$75 remain on a participant's account unless a refund is requested. All credits are automatically applied toward future registrations.

Credits of \$75 or more are automatically refunded if a credit card was used for the original purchase, unless the credit is the result of a waitlist enrollment. In the case of cash/check payment, credits of \$75 or more remain on the participant's account unless a refund is requested.

Refunds will either be issued directly to the credit card used for the original purchase, or in the case of cash/check payment, via check. Check refunds are issued monthly.

To request the refund of an account credit, please call 630.960.7600 or email [adminstaff@seaspar.org](mailto:adminstaff@seaspar.org).

## FEE ASSISTANCE PROGRAM

SEASPAR is in a position to offer scholarships for a percentage of fees to our families with financial restrictions because we believe all residents, regardless of financial limitations, should have access to SEASPAR programs. Participants in need of financial assistance may obtain a Fee Assistance Program Application by visiting our website at SEASPAR.org or calling 630.960.7600. Fee assistance is not available to non-residents.

## WILLOWBROOK RESIDENTS

Until the Village of Willowbrook officially joins SEASPAR in September 2024, Willowbrook residents should use the In-Person/Fax/Email Registration options. Willowbrook registrations will be processed after current resident registrations. Online registration will be open to Willowbrook residents beginning with the Fall 2024 season.

## CONTACT US

Never hesitate to contact SEASPAR with your questions. Our staff is eager to assist you!

**BY PHONE** 630.960.7600  
TRS 711

**BY EMAIL** adminstaff@seaspar.org

**SOCIAL MEDIA** Facebook.com/SEASPAR  
Instagram.com/WeAreSEASPAR

## OFFICE HOURS

Monday–Friday, 8:30am–4:30pm  
Recorded Message After Hours.

**The SEASPAR office will be closed on:**

May 27 July 4

## OFFICE LOCATION

4500 Belmont Road, Downers Grove, IL 60515

## CAMP LOCATIONS

### BARNSDALE ROAD SCHOOL

920 Barnsdale Road, La Grange Park

### CENTENNIAL COMMUNITY & AQUATIC CENTER

16028 127th Street, Lemont

### JOHN LAIDLAW ELEMENTARY SCHOOL

4072 Forest Avenue, Western Springs

### LA GRANGE COMMUNITY CENTER

200 Washington Street, La Grange

### LESTER ELEMENTARY SCHOOL

236 Indianapolis Avenue, Downers Grove

### SOUTH SCHOOL

133 S Grant Street, Westmont

## FOLLOW US

Don't miss another moment! Follow SEASPAR on your favorite social media app for more news, photos, videos, and the latest stories about your favorite activities.



## PROGRAM ANATOMY

### 1. PROGRAM NAME

This section describes the name of the program.

### 2. PROGRAM DESCRIPTION

This section includes a brief description of the program.

### 3. PROGRAM NOTICES

Notices, if any, will appear here. This section highlights important information the participant should be aware of before registering.

### 4. SESSION INFORMATION

This section includes information you need to know when selecting your program(s) such as age requirements, location, session (Sess.) registration code, meeting day(s), meeting time, and program date(s).

### 5. ATTENTION AREA

Identifies important details specific to the program including dates which the program will not meet.

### 1 EXAMPLE NAME

2 Program descriptions helps you understand a program's focus.

3 **Note:** Important program notices (if any) will be displayed in this area.

Age This area identifies the program's age range.  
Location Visit page 4 for a list of program location addresses.

4	Sess.	Code	Day(s)	Time	\$	Date(s)
	1	1-300-02-1	M-F	9:00am-3:00pm	\$250	6/12-6/16
	2	1-300-02-2	M-F	9:00am-3:00pm	\$250	6/19-6/23
	3	1-300-02-3	M-F	9:00am-3:00pm	\$250	6/26-6/30

5 **No Program Dates** No program dates (if any) will be displayed here.



To register online, visit  
**SEASPAR.org** or scan  
the code with your phone.

## TRANSPORTATION

### IN-PROGRAM TRANSPORTATION

SEASPAR will provide transportation for field trips offered during program.

The following procedures are required to ensure the safety of program participants while riding in vehicles:

- SEASPAR reserves the right to refuse to transport individuals.
- All passengers must be sitting in seats or wheelchairs with seat belts securely fastened, or the driver will not move the vehicle.
- All wheelchairs must have brakes that are in good working condition and can stop the chair from moving.
- Persons using an Amigo-type scooter or stroller must transfer to a vehicle seat and use a seat belt.
- SEASPAR staff are responsible for determining whether a participant can be transported safely.

### THREE WRITE-UP RULE

The "Three Write-Up Rule" applies to all campers. If there is a problem with a camper on the bus (e.g., hitting, swearing, getting out of the seat), the incident is documented by the staff member, and the parents are notified. SEASPAR staff will work with the child and parent to prevent the incident from occurring a second time. If a second incident does occur, the same procedures are followed. On the third incident, the camper will no longer be permitted to ride the bus. This rule is for the safety of all involved.

### SEVERE WEATHER

Please review the Severe Weather Guidelines on page 12 for information about transportation in severe weather.

## CAR SEATS AND HARNESES

Parents of children who are under eight years of age may provide a car seat for their child if they wish. The car seat will need to be installed and taken out of the bus daily and meet all safety standards. If your child wears a harness on the bus during the school year, a harness is required for camp as well. Please make sure that SEASPAR is aware that your child needs a harness.

## CAMP T-SHIRT

Campers will be provided with a camp t-shirt. Please have your camper wear the t-shirt on field trip days. Please label all items with your child's name. Mark shoes, towels, underwear, swimsuits – everything!

## CLOTHING

Campers should wear comfortable play clothes. Gym shoes and socks are required. Sandals, flip flops, and shoes with heels are strongly discouraged due to the active nature of camp. Please send an old shirt or smock for your child to wear while painting. Please label each piece of clothing with your child's name. Many activities have been planned for the outdoors, so it is important campers are prepared. Sunglasses and hats are recommended.

## LUNCH/SNACK

Campers are responsible for bringing their own lunch and beverage each day. SEASPAR provides a beverage as supplemental refreshment on hot and especially active days. Campers will be offered a snack. Please make sure to list all dietary restrictions and allergies in your ePACT Emergency Form and make day camp staff aware. Campers should bring a pre-filled water bottle to camp each day.

## MEDICATION

If your child is to receive medication during camp, all medication must be in envelopes provided by SEASPAR and labeled with the camper's name, medication, dosage, and time to be administered. A supply of the medication for the duration of the camp, along with specific instructions for administering the medication, is to be turned in to SEASPAR by **Wednesday, June 5**. Staff log medication distribution and require the medication before camp begins. If medication is not received prior to the first day of camp, camp staff will not be able to administer medication until processed by the Day Camp Coordinator. Medication is always kept in a locked bag, except when getting medication out for campers. Please abide by these rules for the safety of your child and others attending camp.

## SUNSCREEN

Because of the nature of the program, much of the day is spent outdoors. In order to protect your child from a sunburn, please provide a labeled bottle of spray-on sunscreen with an SPF (sun protection factor) which adequately protects your child's skin. Sunscreen can be brought to SEASPAR or sent with your child on the first day of camp. We recommend a sunscreen stick as a great way to apply sunscreen to cheeks and nose.

## SWIMMING/AQUATICS

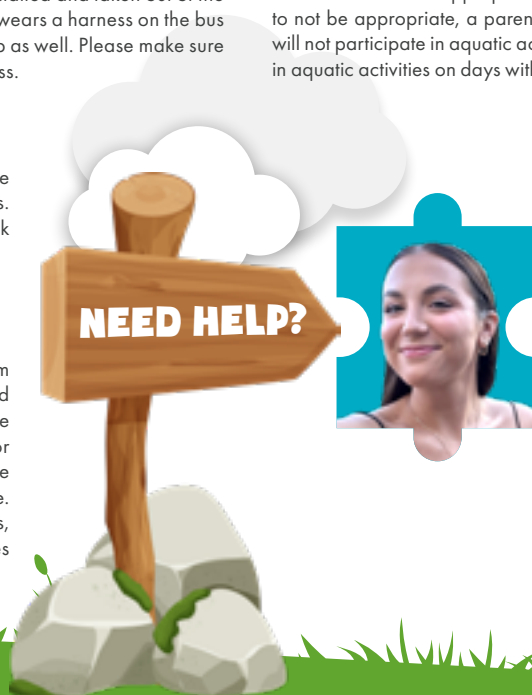
Campers will be participating in aquatic activities at some point during their time at camp. Please be sure to send your child to camp with their swimsuit and towel. Swimsuits should be appropriate for camp and fit the camper. If a swimsuit is found to not be appropriate, a parent/guardian will be contacted and the participant will not participate in aquatic activities that day. Campers will not be participating in aquatic activities on days with an air temperature below 65° degrees.

### STEPHANIE'S HERE!

Day Camp Coordinator Stephanie Stocks is a firm believer of the role a positive summer camp experience can have in the development of today's children and young adults. Her goal is to provide each participant the opportunity to achieve their highest potential while enjoying the best life has to offer.

Have questions about summer camp or other youth programming? Contact Stephanie!

**STEPHANIE STOCKS, CTRS**  
sstocks@seaspar.org • 630.960.7665





# PRESCHOOL CAMP

**NEW!**

## PRESCHOOL CAMP

Preschool Camp is a new opportunity for children ages 3 to 6 who are looking for some day camp fun to wrap up the summer. This half-day camp is filled with fun crafts, indoor/outdoor activities, and socializing with friends!

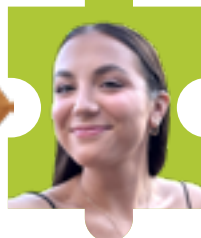
Age	3 - 6			
Location	Barnsdale Road School, La Grange			
Code	Day(s)	Time	\$	Date(s)
4-300-07-1	M - F	9-11:30am	\$90	7/15-7/19
4-300-07-2	M - F	9-11:30am	\$90	7/22-7/26
4-300-07-3	M - F	9-11:30am	\$90	7/29-8/2



# KIDS CAMP



**NEED HELP?**



**STEPHANIE STOCKS, CTRS**  
sstocks@seaspar.org • 630.960.7665



## KIDS CAMP DOWNERS GROVE

Kids Camp is perfect for campers 5 to 12 years old ready to reengage with summertime fun. Engaging art projects, aquatics, field trips, and indoor/outdoor activities deliver the summer camp experience kids love!

Age	5 - 12			
Location	Lester Elementary School, Downers Grove			
Code	Day(s)	Time	\$	Date(s)
4-300-01-1	M - F	9am-3pm	\$260	6/10-6/14
4-300-01-2	M - F	9am-3pm	\$208	6/17-6/21
4-300-01-3	M - F	9am-3pm	\$260	6/24-6/28
4-300-01-4	M - W	9am-3pm	\$156	7/1-7/3
4-300-01-5	M - F	9am-3pm	\$260	7/8-7/12
4-300-01-6	M - F	9am-3pm	\$260	7/15-7/19
4-300-01-7	M - F	9am-3pm	\$260	7/22-7/26
4-300-01-8	M - F	9am-3pm	\$260	7/29-8/2

 No program dates

6/19, 7/4-7/5

## KIDS CAMP WESTERN SPRINGS

Kids Camp is perfect for campers 5 to 12 years old ready to reengage with summertime fun. Engaging art projects, aquatics, field trips, and indoor/outdoor activities deliver the summer camp experience kids love!


Age	5 - 12			
Location	John Laidlaw Elementary School, Western Springs			
Code	Day(s)	Time	\$	Date(s)
4-300-02-1	M - F	9am-3pm	\$260	6/10-6/14
4-300-02-2	M - F	9am-3pm	\$208	6/17-6/21
4-300-02-3	M - F	9am-3pm	\$260	6/24-6/28
4-300-02-4	M - W	9am-3pm	\$156	7/1-7/3
4-300-02-5	M - F	9am-3pm	\$260	7/8-7/12
4-300-02-6	M - F	9am-3pm	\$260	7/15-7/19
4-300-02-7	M - F	9am-3pm	\$260	7/22-7/26
4-300-02-8	M - F	9am-3pm	\$260	7/29-8/2

 No program dates

6/19, 7/4-7/5

## KIDS HALF DAY CAMP LA GRANGE

Whether you prefer a shorter camp day or want to join after summer school, Kids Half Day Camp is a great option for a summer full of fun. This camp provides engaging art projects, socializing, and indoor/outdoor activities that deliver the summer camp experiences kids love!

 This option is held in cooperation with the LADSE (La Grange Area Department for Special Education) ESY program.

Age	5 - 12			
Location	Barnsdale Road School, La Grange			
Code	Day(s)	Time	\$	Date(s)
4-300-05-1	M - F	11:30am-3:30pm	\$168	6/10-6/14
4-300-05-2	M - F	11:30am-3:30pm	\$135	6/17-6/21
4-300-05-3	M - F	11:30am-3:30pm	\$168	6/24-6/28
4-300-05-4	M - W	11:30am-3:30pm	\$103	7/1-7/3
4-300-05-5	M - Th	11:30am-3:30pm	\$135	7/8-7/11

 No program dates

6/19, 7/4-7/5

## KIDS CAMP CONSIDERATIONS

Campers participate in weekly swimming at an outdoor pool. Swimmers are provided proper assistance and supervision while in the pool. Please notify your site director if your child requires aquatic safety equipment. Pool activities will not be held without a lifeguard on duty or during inclement weather.

Several field trips are planned each session. Dates and destinations will be provided in a separate document in June. You are expected to review your schedule. Dates are subject to change.

## TEEN AND ADULT CAMP LEMONT

Teen & Adult Camp is perfect for campers 13 to 22 years old longing for unforgettable fun this summer. Engaging art projects, field trips, aquatics, and indoor/outdoor activities deliver the summer camp experiences campers love!

Age	13 - 22			
Location	Centennial Community & Aquatic Center, Lemont			
Code	Day(s)	Time	\$	Date(s)
4-300-03-1	M - F	9am-3pm	\$295	6/10-6/14
4-300-03-2	M - F	9am-3pm	\$236	6/17-6/21
4-300-03-3	M - F	9am-3pm	\$295	6/24-6/28
4-300-03-4	M - W	9am-3pm	\$177	7/1-7/3
4-300-03-5	M - F	9am-3pm	\$295	7/8-7/12
4-300-03-6	M - F	9am-3pm	\$295	7/15-7/19
4-300-03-7	M - F	9am-3pm	\$295	7/22-7/26
4-300-03-8	M - F	9am-3pm	\$295	7/29-8/2

 No program dates

6/19, 7/4-7/5

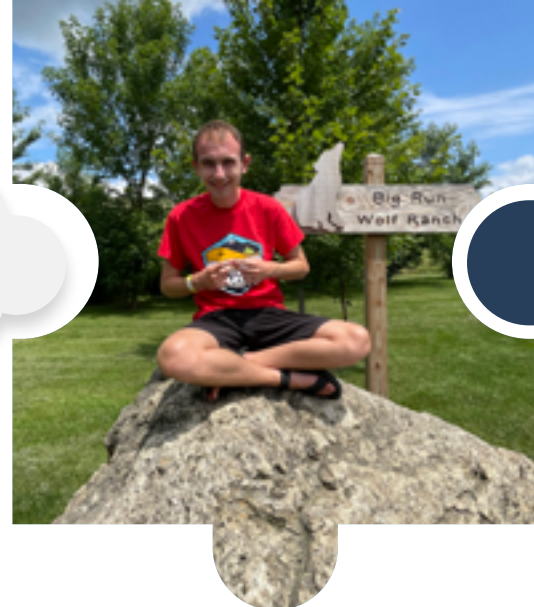
## TEEN AND ADULT CAMP WESTMONT

Teen & Adult Camp is perfect for campers 13 to 22 years old longing for unforgettable fun this summer. Engaging art projects, field trips, aquatics, and indoor/outdoor activities deliver the summer camp experiences campers love!


Age	13 - 22			
Location	South School, Westmont			
Code	Day(s)	Time	\$	Date(s)
4-300-04-1	M - F	9am-3pm	\$295	6/10-6/14
4-300-04-2	M - F	9am-3pm	\$236	6/17-6/21
4-300-04-3	M - F	9am-3pm	\$295	6/24-6/28
4-300-04-4	M - W	9am-3pm	\$177	7/1-7/3
4-300-04-5	M - F	9am-3pm	\$295	7/8-7/12
4-300-04-6	M - F	9am-3pm	\$295	7/15-7/19
4-300-04-7	M - F	9am-3pm	\$295	7/22-7/26
4-300-04-8	M - F	9am-3pm	\$295	7/29-8/2

 No program dates

6/19, 7/4-7/5

TEEN AND ADULT HALF DAY CAMP  
LA GRANGE

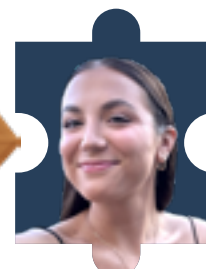
Whether you prefer a shorter camp day or want to join after summer school, Teen and Adult Half Day Camp is a great option for a summer full of fun. This camp provides engaging art projects, socializing, and indoor/outdoor activities that deliver a summer to remember!

 This option is held in cooperation with the LTHS (Lyons Township High School) ESY program.

Age	13 - 22			
Location	La Grange Community Center			
Code	Day(s)	Time	\$	Date(s)
4-300-06-1	M - F	11:30am-3:30pm	\$168	6/10-6/14
4-300-06-2	M - F	11:30am-3:30pm	\$135	6/17-6/21
4-300-06-3	M - F	11:30am-3:30pm	\$168	6/24-6/28
4-300-06-4	M - W	11:30am-3:30pm	\$103	7/1-7/3

 No program dates

6/19, 7/4-7/5



**STEPHANIE STOCKS, CTRS**  
sstocks@seaspar.org • 630.960.7665



# TEEN AND ADULT CAMP



## TEEN & ADULT CAMP CONSIDERATIONS

Campers participate in weekly swimming at an outdoor pool. Swimmers are provided proper assistance and supervision while in the pool. Please notify your site director if your child requires aquatic safety equipment. Pool activities will not be held without a lifeguard on duty or during inclement weather.

Several field trips are planned each session. Dates and destinations will be provided in a separate document in June. You are expected to review your schedule. Dates are subject to change.

## ABSENCES

If your child will be absent for any reason, call or text your camp site prior to the start of camp. Staff will be unreachable during nights and weekends. You can also contact the SEASPAR office at 630.960.7600.

## ADA STATEMENT

SEASPAR is committed to accessibility for all individuals with disabilities, and strives to comply with the 1990 Americans with Disabilities Act by providing reasonable accommodations for all individuals. Please advise SEASPAR of any special assistance or accommodation required to participate in programs. Visit SEASPAR.org to view our ADA Notice and Grievance Procedure.


To request this program guide in an alternative format, please contact Morgan Mason at mmason@seaspar.org.

## ATLANTOAXIAL INSTABILITY

Individuals with Down syndrome are at risk of having Atlantoaxial Instability (AAI) which causes decreased stability in the bones of the upper spine. For the safety of our participants, individuals with Down syndrome are not allowed to participate in the butterfly stroke in swimming, diving, tumbling, gymnastics, high jump, and other activities unless they have tested negative for AAI. For more information, contact SEASPAR at 630.960.7600.

## CHECK IN

Staff will develop a pick-up/drop off system.

 **Note:** SEASPAR staff are not responsible for supervision of participants prior to the start of the program. The check-in process for each camp site will not start until at least 10 minutes before camp. Day camp staff will start the check-in process as soon as the camp site is ready for the day.

## DAY CAMP CODE OF CONDUCT

SEASPAR asks all participants and family members to observe the behavior code below which was developed to ensure enjoyable and safe program experiences for staff, campers, and the community. SEASPAR will attempt reasonable accommodations to enable participants to meet behavior expectations. Additional rules are developed for camp as deemed necessary by the staff.

- Show respect to all participants, staff, and public.
- Listen to and comply with staff direction and program rules.
- Allow others in the program and others at public facilities to enjoy the activity without disruption (within reason).
- Refrain from using foul language or other offensive behavior such as rude gestures, sexually explicit language, or inappropriate touching.
- Refrain from causing bodily harm or aggressive physical contact to other participants and staff.
- Show respect to equipment, supplies, and facilities.
- No bullying behavior will be tolerated.

## DISCIPLINE

SEASPAR applies a caring, positive approach to discipline. Staff review rules with campers and are willing to work with parents to develop behavior modification programs or behavior plans as necessary. When conduct expectations are not met, staff will take reasonable steps to accommodate the behavior and minimize future risks. However, when accommodations are attempted and are unsuccessful, or when no reasonable accommodation exists to avoid future risks, SEASPAR may take actions such as removing a camper from an activity for a short period of time, removing a camper for the remainder of the day, or removing a camper from camp for the rest of the summer. Notwithstanding, SEASPAR is not required to do so and may, at its sole discretion, forgo lesser forms of discipline at any time and proceed immediately with suspending participation from camp. If a camper needs to be removed from camp for the day due to behavior, a parent will be contacted and asked to immediately pick up their child. If a parent cannot be contacted, camp staff will start calling emergency contacts.

## LATE REGISTRATION

The registration deadline is Monday, April 22 at 4:30 pm. Many programs fill quickly, and registering by the deadline is the best way to avoid being put on a waitlist. Participants may not be added to a program with less than 48 hours notice.

## NEW! EMERGENCY FORM (EPACT)

SEASPAR has partnered with ePACT for the completion of each participant's Emergency Form (previously referred to as the Annual Information Form). The Emergency Form is completed once, then updated by the parent/guardian as changes occur or is reconfirmed annually. Once a participant expresses interest in registering for SEASPAR programs, the parent/guardian is sent an email from ePACT and completes the Emergency Form online. Completion of the Emergency Form is required in order to register for camp.

## LOSS/THEFT/DAMAGES

Label all items brought to programs with the participant's name. Any electronic communication device or adaptive equipment must be checked in with a staff member upon arrival at the program. Participants are encouraged not to bring items of value. SEASPAR is not responsible for theft, loss, or damages of personal belongings.

## NON-RESIDENT FEE POLICY

SEASPAR does not accept non-resident participants unless they reside in an unincorporated area. An unincorporated area is property not within the boundaries of a park district or municipality, e.g., village, town, city. A 100% increase in fees is charged for non-residents to participate. Example: A \$20 resident fee is multiplied by two for a total of \$40. Registration forms for non-residents are accepted at any time, but are not processed until resident registration is completed. In all cases, residents are given priority and non-residents are admitted to programs only after all interested residents are served.

## PARTICIPANT EXPECTATIONS

SEASPAR provides leisure opportunities for individuals with disabilities, and while participating in our programs, we stress socialization skills, appropriate behavior, and personal appearance. For the dignity and acceptance of individuals with disabilities, and for their overall self-esteem and enjoyment in community outings, the staff has developed a list of participant expectations. We ask that you assist us in fulfilling these basic guidelines. The participant guidelines were developed for the betterment of our participants, their self-esteem, and socialization.

- Clean, dry clothing.
- No bowel/bladder problems upon arrival at the program. If this is a concern, extra clean clothing, cleanup supplies, and Depends garments must be sent with the participant.
- Attention to body odors (should smell fresh).
- Appearance should be clean.
- Appropriate attire for program participation (gym shoes, warm-ups, or loose-fitting clothing for athletic, sports, or exercise programs). If you have a question about attire, call us at 630.960.7600.

Staff will be consistent in stressing personal hygiene while participants are at programs.



## PARTICIPANT SUPERVISION

If a participant has not been picked up at the scheduled program end time, the parent/guardian/group home staff will be contacted. After a fifteen-minute wait period, emergency contacts will be called. After one warning, a \$10 fee will be applied for every fifteen minutes that a participant is picked up late or the SEASPAR vehicle is delayed. In extreme cases when a participant must be transported home by SEASPAR, a \$20 fee will be charged to the participant's account in each instance. A notice will be sent to the parent/guardian indicating the fee being charged to the account.

## PARTICIPATION

Participants should be willing to voluntarily participate in the scheduled activities. SEASPAR staff encourage and aid, but do not force participation.

## PHOTOGRAPH/VIDEO/NAME USAGE POLICY

By registering yourself or your child/ward in a SEASPAR program or event, you consent that SEASPAR has the right to photograph or film you or your child/ward and use the photos/videos for any purpose in any medium of communication, without compensation. Full names of participants may also be published, especially if they participate in athletics or performing arts programming. If there is a specific reason you or your child/ward cannot be photographed or named, please call us at 630.960.7600.

## PROGRAM CANCELLATIONS

- A program may be cancelled if the program minimum enrollment is not met.
- Programs may be cancelled due to inclement weather or other emergencies. See the Weather/Emergency Cancellations section for more information.
- If a participant cannot attend a program, he/she cannot send a substitute in his/her place.

## SEASPAR/WDSRA AGREEMENT

SEASPAR and the Western DuPage Special Recreation Association (WDSRA) have an agreement that allows residents of each SRA to register in the weekly programs and special events of the other at their in-district rate. Overnight trips and the EAGLES adult day program are not included. Registrations must be submitted by the agency's deadline, and are processed after those of the agency's residents. WDSRA serves the communities of Bloomingdale, Carol Stream, Glen Ellyn, Naperville, Roselle, Warrenville, West Chicago, Wheaton, and Winfield. For more information, contact SEASPAR at 630.960.7600. For a copy of the WDSRA brochure, contact WDSRA at 630.681.0962 or visit its website at WDSRA.com.

## WEATHER/EMERGENCY CANCELLATIONS

Camp may be cancelled due to inclement weather or other unforeseen circumstances. If a camp is cancelled, staff attempt to reach all participants to inform them of the change. Camps cancelled due to inclement weather will result in a refund issued in form of a credit on the participant's account.

## SEVERE SUMMER WEATHER GUIDELINES

- All programs are cancelled when the heat index reaches or exceeds 110°.
- All programs (including indoor) are cancelled when a tornado warning is in effect for the surrounding area. SEASPAR uses discretion for all other weather watches and warnings.

A variety of weather conditions such as extreme heat, lightning, and tornadoes have all been experienced at camp. Please be assured that the staff are made aware of weather-related concerns and all precautions are in place to protect campers.

If your child is prone to illness due to extreme heat, you may want to consider keeping him or her home on those particular days. Camp will be canceled if the heat index reaches 110°.

Field trip buses generally are not air-conditioned. If your child requires an air-conditioned bus for medical reasons, please provide SEASPAR with a doctor's note before camp starts so that an air-conditioned bus can be ordered. All camp facilities are air-conditioned.

Please be advised that SEASPAR will not transport children to or from camp if there is a tornado warning in effect. Parents may need to pick up their child at camp. Feel free to call SEASPAR on days when weather conditions may be in question.

## WELLNESS GUIDELINES

In consideration of other participants and staff, and to prevent the spread of contagious illnesses, it is required that participants refrain from attending programs when any of the following conditions exist:

- Fever of 100.4° or higher within the last 24 hours.
- Vomiting within the last 24 hours.
- Persistent diarrhea in conjunction with other symptoms.
- Contagious rash or a rash of unknown origin.
- Persistent cough and/or cold symptoms.
- Eye infections or discharge from the eye.
- Symptoms of mumps, measles, chicken pox, strep throat, flu, impetigo, or Coxsackievirus.
- Fatigue due to illness that hinders participation in a program.
- Runny nose with yellow or green discharge.
- Lice or mites.

Please notify SEASPAR if the participant contracts any contagious illness that will affect attendance at a program. Participants should return to programs at the doctor's recommendation, or, if not under a doctor's care, when the symptoms have clearly passed.

Participants must refrain from attending camp if they are exhibiting symptoms such as fever, stuffy nose, cough, sore throat, muscle ache, headache, nausea, vomiting, or diarrhea. If COVID-19 is suspected or diagnosed, participants may return to camp after quarantine or isolation, based on the current CDC, state, and local guidelines.

If a child becomes ill during camp, a parent will be notified and asked to immediately pick up the child. If a parent is unavailable, the emergency contact will be called. In case of an illness or contagious disease, please notify SEASPAR.

## DAILY ROUTINE

### GET TO KNOW YOUR DAILY ROUTINE

Our campers are a busy bunch while attending camp. While each day offers campers a smorgasbord of options and new opportunities to enjoy their summer, all camps are structured to follow a general daily routine. Understanding our daily schedule may help your family and camper prepare each day's journey more effectively.

 **Note:** Daily routines subject to change.

### FULL DAY

#### 9:00-9:15am

Arrival  
Camp gear drop off  
Schedule review

#### 9:15-10:00am

Playground time OR  
Morning activity #1

#### 10:00-10:30am

Morning activity #2

#### 10:30-11:00am

Morning activity #3

#### 11:00-11:45am

Lunchtime

#### 11:45am-12:15pm

Change into swimsuit  
Packing to head to pool

#### 12:15-1:30pm

Swim time

#### 1:30-2:00pm

Clothing change  
Afternoon activity #1

#### 2:00-2:30pm

Playground OR  
Afternoon activity #2

#### 2:30-2:45pm

Snack time

#### 2:45-3:00pm

Help create take-home notes  
Prepare for departure

#### 3:00pm

Pick up

### HALF DAY

#### 12:00-12:45pm

Arrival  
Lunchtime

#### 12:45-1:00pm

Clean up  
Bathroom break

#### 1:00-1:30pm

Playground time OR  
Activity #1

#### 1:30-2:00pm

Activity #2

#### 2:00-2:30pm

Activity #3

#### 2:30-3:00pm

Activity #4

#### 3:00-3:15pm

Activity #5

#### 3:15-3:30pm

Clean up  
Help create take-home notes  
Prepare for departure

#### 3:30pm

Pick up

## EXCLUSIVE OFFER

The Morton Arboretum® | 100 YEARS  
GROWING STRONG

## Nature Play for All Weekend

Children's Garden at The Morton Arboretum

June 1 and 2, 10am to 2pm

**Free Access for SEASPAR Families**

SEASPAR families are invited to visit the Children's Garden at The Morton Arboretum to play, wonder, and explore nature through accessible activities. Access includes pond exploration, seed planting, creative nature art, story times in American Sign Language, sensory hikes, and more.

### Register

SEASPAR families may take advantage of this opportunity by registering online at [SEASPAR.org/MortonNPAW2024](https://SEASPAR.org/MortonNPAW2024).

### Event Location



**The Morton Arboretum**  
4100 Illinois Route 53  
Lisle, IL 60532  
630.968.0074



# SUMMER CAMP REGISTRATION FORM

14

Participant's Name \_\_\_\_\_ Birth Date \_\_\_\_\_

 Please print your program selection(s) in the table below. Attach additional sheets if necessary. 

PROGRAM NAME	PROGRAM NUMBER										FEE
Example: Kids Camp Downers Grove	4	-	3	0	0	-	0	1	-	1	\$260
		-				-			-		\$
		-				-			-		\$
		-				-			-		\$
		-				-			-		\$
		-				-			-		\$
		-				-			-		\$
		-				-			-		\$
		-				-			-		\$
		-				-			-		\$
		-				-			-		\$
		-				-			-		\$
		-				-			-		\$
		-				-			-		\$
		-				-			-		\$
		-				-			-		\$
		-				-			-		\$
Would you like to include a donation to SEASPAR? If so, please indicate the amount to the right. <b>Thank you!</b>											\$
TOTAL FEES											\$

 Full payment must be received with the registration unless other arrangements have been made. 

Payment may be made by check, money order, cash, or credit card.


Payment Type:    ☐ Check            ☐ Cash            ☐ Money Order    ☐ Credit Card  
 Credit Card:      ☐ MasterCard    ☐ Visa            ☐ Discover        ☐ American Express

Cardholder Name \_\_\_\_\_

Account Number \_\_\_\_\_ Exp. Date \_\_\_\_\_ CVC \_\_\_\_\_

Authorized Signature \_\_\_\_\_ Today's Date \_\_\_\_\_

**Please complete both sides of this registration form.** Submit form and payment to SEASPAR, 4500 Belmont Road, Downers Grove, IL 60515.

 The registration deadline is **Monday, April 22 at 4:30pm.**

OFFICE USE ONLY			
Date Rec'd		Cash Amt	
Rec'd By		Check Amt	
FAP		Check #	

Participant's Name \_\_\_\_\_ Birth Date \_\_\_\_\_

Address \_\_\_\_\_ City \_\_\_\_\_ Zip \_\_\_\_\_

Has any of your information changed since you completed your Emergency Form? ☐ Yes ☐ No

If so, please log into your ePACT account to make updates.

**WAIVER AND RELEASE**

SEASPAR is committed to conducting its recreation programs and activities in a safe manner and holds the safety of participants in high regard. SEASPAR continually strives to reduce such risks and insists that all participants follow safety rules and instructions that are designed to protect the participants' safety. However, participants and parents/guardians of minors registering for activities must recognize that there is an inherent risk of injury when choosing to participate in recreational activities.

You are solely responsible for determining if you or your minor child/ward are physically fit and/or adequately skilled for the activities contemplated by this agreement. It is always advisable, especially if the participant is pregnant, disabled in any way or has recently suffered an illness, injury or impairment, to consult a physician before undertaking any physical activity.

**WARNING OF RISK**

Recreational activities are intended to challenge and engage the physical, mental, and emotional resources of each participant. Despite careful and proper preparation, instruction, medical advice, conditioning, and equipment, there is still a risk of serious injury when participating in any recreational activity. All hazards and dangers cannot be foreseen. Depending on the particular activity, certain risks, dangers, and injuries may exist due to inclement weather, slips and falls, poor skill level or conditioning, carelessness, horseplay, unsportsmanlike conduct, premises defects, inadequate or defective equipment, inadequate supervision, instruction or officiating, and other risks inherent to the particular activity. In this regard, it is impossible for SEASPAR to guarantee absolute safety.

In virtual program activities, you need to have adequate space to follow the activity instructions and to move safely without exposure to any obstacles, obstructions, steps or anything that could cause possible trips or falls. As a participant, you are solely responsible for assessing whether you can participate safely in the activity in the space you have chosen without accidents.

**WAIVER AND RELEASE OF ALL CLAIMS AND ASSUMPTION OF RISK**

Please read this form carefully and be aware that in signing up and participating in this activity, you will be expressly assuming the risk and legal liability and waiving and releasing all claims for injuries, damages or loss which you or your minor child/ward might sustain as a result of participating in any and all activities connected with and associated with this activity (including transportation services and vehicle operations, when provided).

I recognize and acknowledge that there are certain risks of physical injury to participants in this activity, and I voluntarily agree to assume the full risk of any and all injuries, damages or loss, regardless of severity, that my minor child/ward or I may sustain as a result of said participation. I further agree to waive and relinquish all claims I or my minor child/ward may have (or accrue to me or my child/ward) as a result of participating in this activity against SEASPAR, including its officials, agents, volunteers and employees.

I understand that SEASPAR carries no medical insurance and the participant's family must cover any medical costs incurred. In the event of an emergency, I understand and authorize SEASPAR staff and officials to secure from any licensed hospital, physician, and/or medical personnel any treatment deemed necessary for immediate care for myself or minor child and agree that I will be responsible for payment of any and all medical services rendered.

I have read and fully understand the above important information, warning of risk, assumption of risk and waiver and release of all claims. If registering online or via fax, my online acceptance or facsimile signature shall substitute for and have the same legal effect as an original form signature.

Parent/Guardian Signature \_\_\_\_\_ Date \_\_\_\_\_

Participant Signature (if 18 or older) \_\_\_\_\_ Date \_\_\_\_\_

**PARTICIPATION WILL BE DENIED** if the waiver is not signed and dated by parent/guardian.**PARTICIPATION WILL BE DENIED** if an up-to-date Emergency Form is not on file.

**FREE  
EVENT****SEASPAR****JUNE 9****TY WARNER PARK, WESTMONT  
FREE ADMISSION • 1-4PM**

## **Food, Family, & Fun**

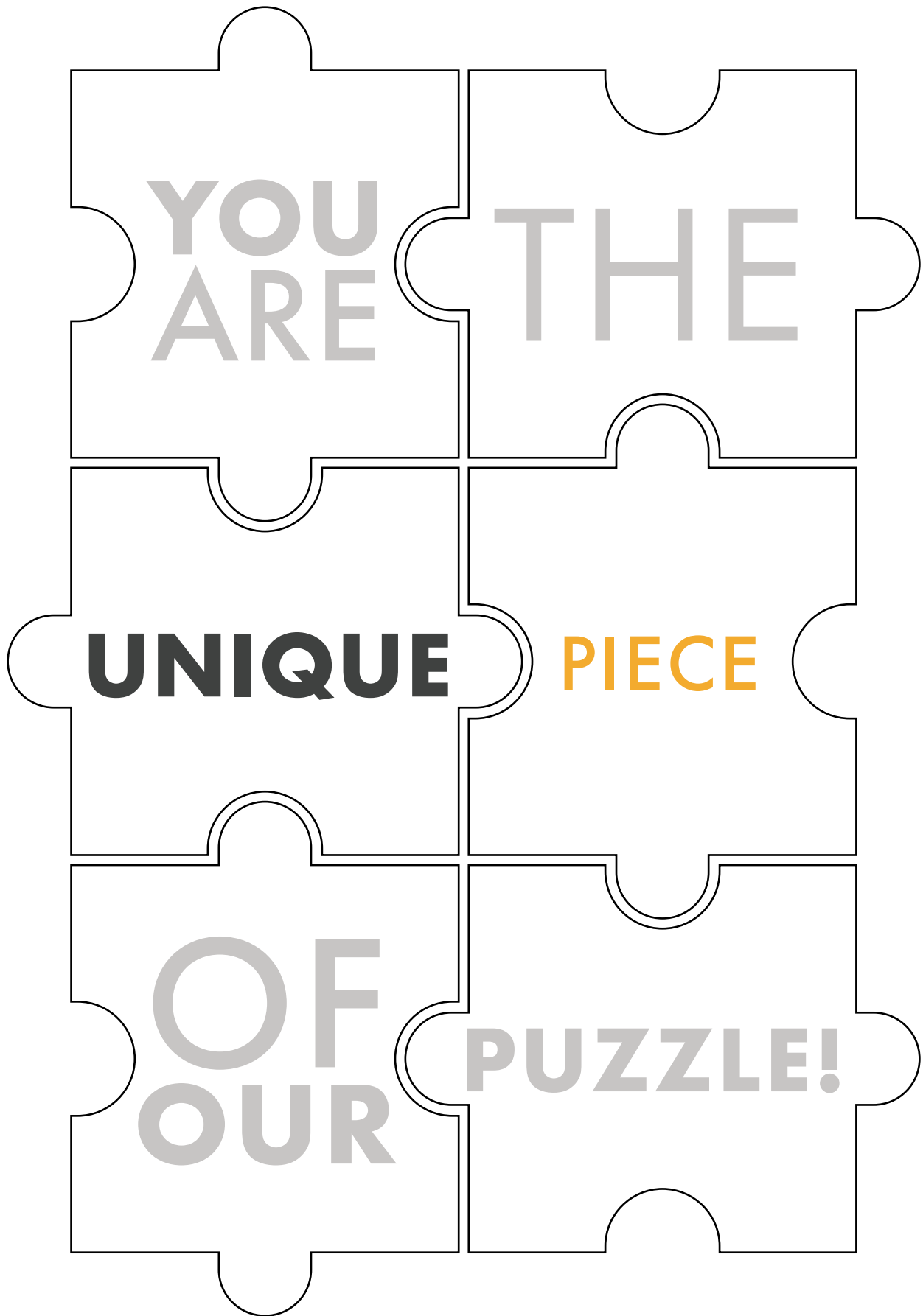
**Save the date! SEASPAR's favorite summertime family event returns with even more fun than ever before. Enjoy food, music, and a variety of activities for all ages. Participation in this event is complimentary for SEASPAR participants and their families. We hope you will join us for a proper summer kickoff!**

**Look out for an official invitation later this spring.**

**SEASPAR.org**









4500 Belmont Road  
Downers Grove, IL 60515

Change Service Requested

POSTMASTER:  
Dated Material – Do Not Hold

If you no longer wish to receive this  
brochure, call 630.960.7600.

SCAN ME



## SERVING THE RESIDENTS OF:

VILLAGE OF BROOKFIELD

CLARENDON HILLS PARK DISTRICT

DARIEN PARK DISTRICT

DOWNERS GROVE PARK DISTRICT

VILLAGE OF INDIAN HEAD PARK

PARK DISTRICT OF LA GRANGE

COMMUNITY PARK DISTRICT OF  
LA GRANGE PARK

LEMONT PARK DISTRICT

LISLE PARK DISTRICT

VILLAGE OF WESTERN SPRINGS

WESTMONT PARK DISTRICT

WOODRIDGE PARK DISTRICT



JOBS THAT  
**LOVE**  
YOU BACK